

RGFA CALCULATIONS

BASEMENT FLOOR:	0 SF
FIRST FLOOR:	3,337 SF
SECOND FLOOR:	2,841 SF
TOTAL:	6,178 SF

TOTAL GSF

BASEMENT FLOOR:	2,417 SF
FIRST FLOOR:	3,327 SF
SECOND FLOOR:	2,841 SF
TOTAL:	8,585 SF

BASEMENT STORY CALCULATION

TOTAL PERIMETER	255' LF
LF PERIMETER MORE THAN 6' ABOVE FINISH GRADE	49.5' LF (19.4%)
LF PERIMETER LESS THAN 6' ABOVE FINISH GRADE	205.5' LF (80.6%)

* THE BASEMENT IS NOT CONSIDERED A STORY ABOVE GRADE

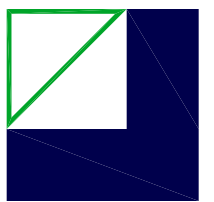
RGFA
1

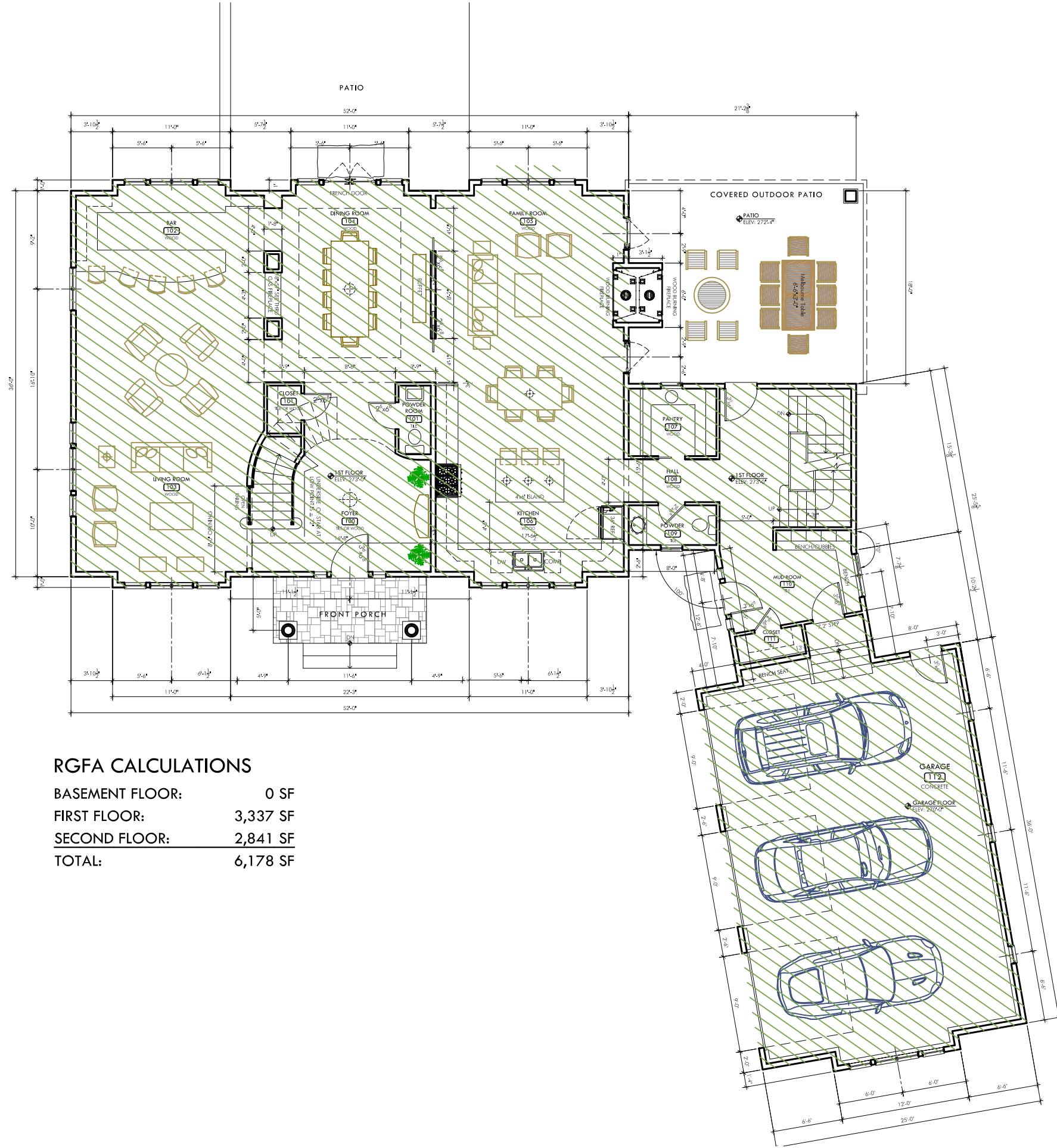
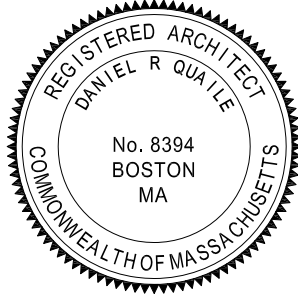
Scale: 3/32"=1'-0"
Date: 9/17/2015
Revision:
Drawn By: DRQ

RGFA CALCULATION PLAN - BASEMENT
314 Glen Road
Weston MA, 02493

Name:

LINCOLN Architects LLC One Mount Vernon Street, Suite 203 T 781.721.7721 F 781.721.0005





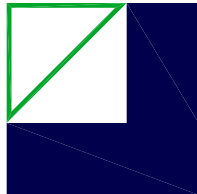
RGFA CALCULATIONS

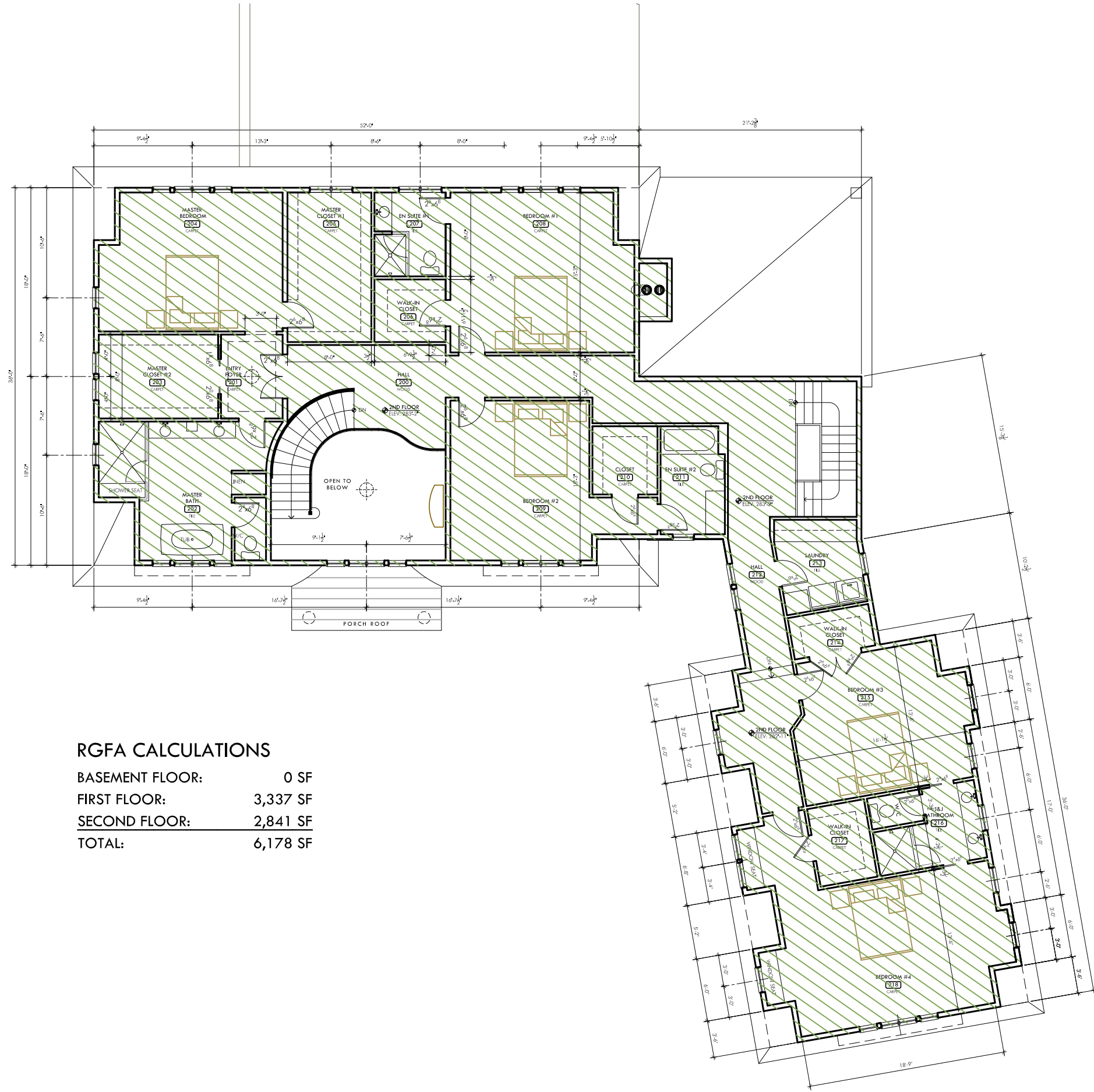
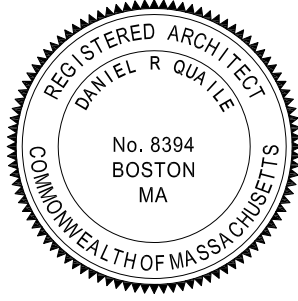
BASEMENT FLOOR:	0 SF
FIRST FLOOR:	3,337 SF
SECOND FLOOR:	2,841 SF
TOTAL:	6,178 SF

Name: **RGFA CALCULATION PLAN - FIRST FLOOR**
 314 Glen Road
 Weston MA, 02493

Scale: 3/32"=1'-0"
 Date: 9/17/2015
 Revision:
 Drawn By: DRQ

RGFA
2





RGFA CALCULATIONS

BASEMENT FLOOR:	0 SF
FIRST FLOOR:	3,337 SF
<u>SECOND FLOOR:</u>	<u>2,841 SF</u>
TOTAL:	6,178 SF

Name: **RGFA CALCULATION PLAN - SECOND FLOOR**
 314 Glen Road
 Weston MA, 02493

LINCOLN Architects LLC - One Mount Vernon Street, Suite 203 T 781.721.7721 F 781.721.0005

Scale: 3/32"=1'-0"
 Date: 9/17/2015
 Revision:
 Drawn By: DRQ

RGFA
3

