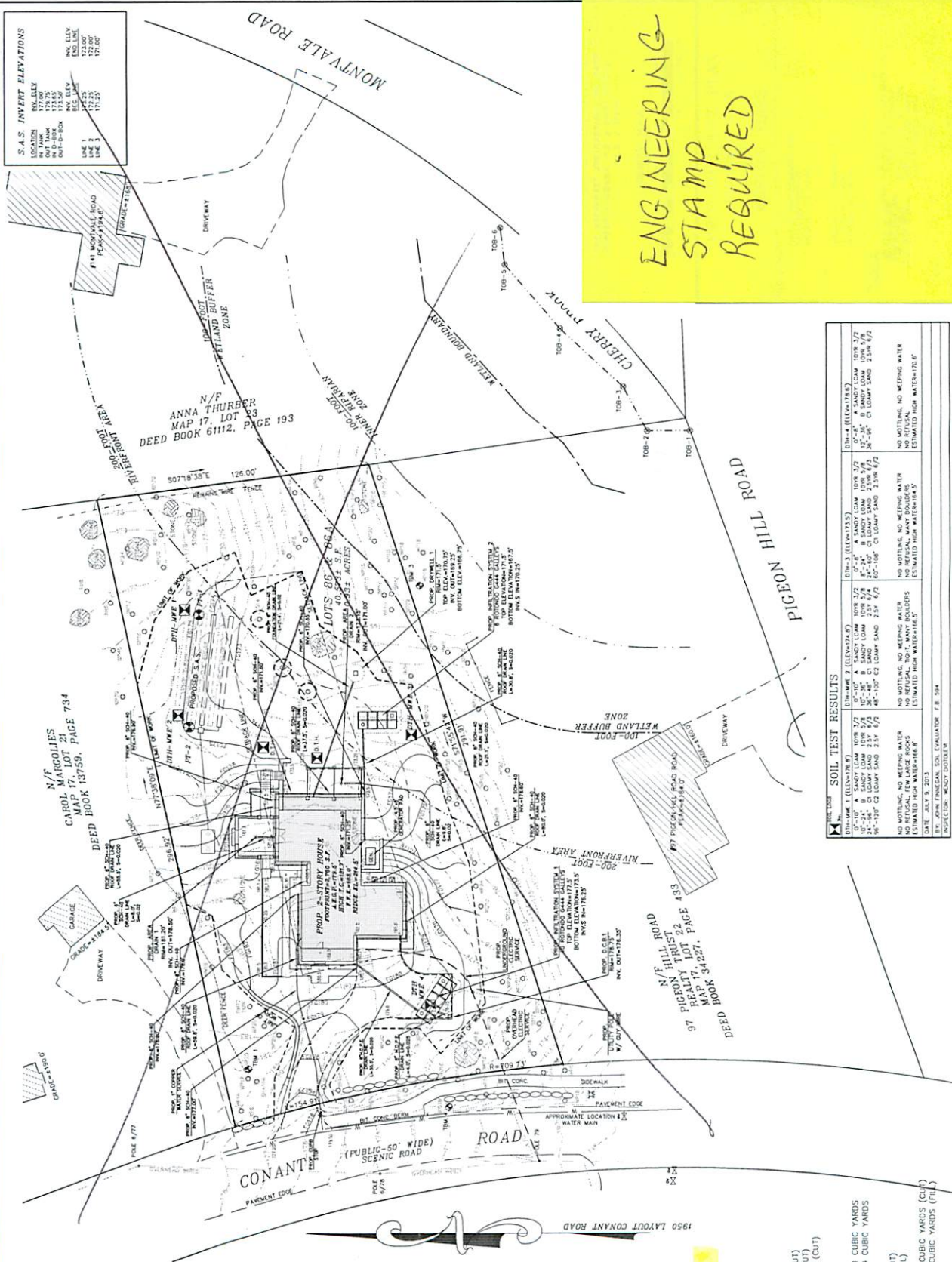


SAMPLE CALCS

ENGINEERING  
STAMP  
REQUIRED



**NOTES:**  
 1. SUBJECT PARCEL IS SHOWN AS ACRES MAP 17, LOT 21.  
 2. THIS SURVEY IS BASED ON RECORD BOOK 6220, PIGEON HILL ROAD SURVEY.  
 3. THE PROPERTY DESCRIBED ON THIS SURVEY DOES NOT LIE WITHIN A FLOOD HAZARD ZONE AS DETERMINED BY THE FEDERAL FLOOD INSURANCE RATE MAP EFFECTIVE DATE OF JUNE 4, 2010.

- LEGEND**
- TM 1 ELEVATION BENCH MARK
  - TM 2 DEEP TEST HOLE
  - TM 3 ELECTRIC LINE
  - TM 4 GAS LINE
  - TM 5 CABLE
  - TM 6 CABLE COIL BERM
  - TM 7 HYDRANT
  - TM 8 NON OR FORMERLY
  - TM 9 SAND OR GRAVEL
  - TM 10 WATER GATE
  - TM 11 WATER LINE
  - TM 12 UTILITY POLE
  - TM 13 TOP OF BANK FLAG
  - TM 14 TOP OF BANK FLAG

**ZONING:**  
 RESIDENCE - DISTRICT A  
 MINIMUM FRONTAGE = 250 FEET  
 MINIMUM SETBACK = 40 FEET  
 MINIMUM SIDE SETBACK = 10 FEET  
 MINIMUM REAR SETBACK = 10 FEET  
 MINIMUM YARD = 40 FEET  
 MINIMUM SIDE YARD = 40 FEET  
 MINIMUM REAR YARD = 40 FEET

**BENCH MARK (TBM)**  
 DATUM ELEVATION - NAVD8 1988  
 ADJUSTED TO NAVD88 USING NOS VERTCON WEB SITE

- TM-1 NAL SET 1' UP 2" WHITE PINE ELEVATION=18315'
- TM-2 NAL SET 1' UP 2" PITCH PINE ELEVATION=18013'
- TM-3 NAL SET 1' UP 16" WHITE PINE ELEVATION=18827'
- TM-4 NAL SET 1' UP 16" RED OAK ELEVATION=17535'

**TREE LEGEND**

CODE	DESCRIPTION	DETAIL
SM	SUGAR MAPLE	○
RD	RED OAK	○
WP	WHITE PINE	○

TREE LOCATION: ○  
 TREE CODE: ○  
 TREE SIZE: ○

**APPROXIMATE EARTHWORK CALCULATIONS:**

TOTAL FILL = 221 C.Y.  
 TOTAL CUT = 961 C.Y.  
 NET EARTHWORK = 740 C.Y. (CUT)  
 EARTHWORK ACTIVITIES EXEMPTED BY BYLAW  
 INFILTRATION SYSTEM 1 - 58 CUBIC YARDS (CUT)  
 INFILTRATION SYSTEM 2 - 48 CUBIC YARDS (CUT)  
 PROPOSED SEPIC SYSTEM - 48 CUBIC YARDS (CUT)  
 NEW FOUNDATION - 409 CUBIC YARDS (CUT)  
 OLD FOUNDATION - 104 CUBIC YARDS (FILL)  
 EARTHWORK (CUT) EXEMPT FROM BYLAW = 651 CUBIC YARDS  
 EARTHWORK (FILL) EXEMPT FROM BYLAW = 104 CUBIC YARDS  
 EARTHWORK ACTIVITIES SUBJECT TO BYLAW  
 GENERAL EARTHWORK - 310 CUBIC YARDS (CUT)  
 GENERAL EARTHWORK - 117 CUBIC YARDS (FILL)  
 EARTHWORK (CUT) SUBJECT TO BYLAW = 310 CUBIC YARDS (CUT)  
 EARTHWORK (FILL) SUBJECT TO BYLAW = 117 CUBIC YARDS (FILL)

**SOIL TEST RESULTS**

DIR-MARK	DEPTH	SOIL TYPE	MOISTURE	LIQUID LIMIT	PLASTICITY INDEX	UNSATURATED WATER CONTENT	SHRINKAGE	STRENGTH	REMARKS
DIR-MARK 1 (ELEV=178.8)	10" - 12"	A SANDY LOAM	10.8%	18.5	1.5	23.5	0.001	1.2	NO NOTING, NO WEeping WATER
DIR-MARK 2 (ELEV=174.5)	10" - 12"	A SANDY LOAM	10.8%	18.5	1.5	23.5	0.001	1.2	NO NOTING, NO WEeping WATER
DIR-MARK 3 (ELEV=173.5)	10" - 12"	A SANDY LOAM	10.8%	18.5	1.5	23.5	0.001	1.2	NO NOTING, NO WEeping WATER
DIR-MARK 4 (ELEV=178.5)	10" - 12"	A SANDY LOAM	10.8%	18.5	1.5	23.5	0.001	1.2	NO NOTING, NO WEeping WATER

DATE: JULY 8, 2013  
 TEST EVALUATOR: F.B. 354  
 NOTES: CONANT, WANDY, GOSWAMI